

Hampshire Water Transfer and Water Recycling Project

Environmental Statement – Appendix 7.6 Figure 1 Study area

VOLUME NUMBER: 6

PLANNING INSPECTORATE SCHEME NUMBER: WA010002

APPLICATION DOCUMENT REFERENCE: 6.3

APFP REGULATION: 5(2)(a)

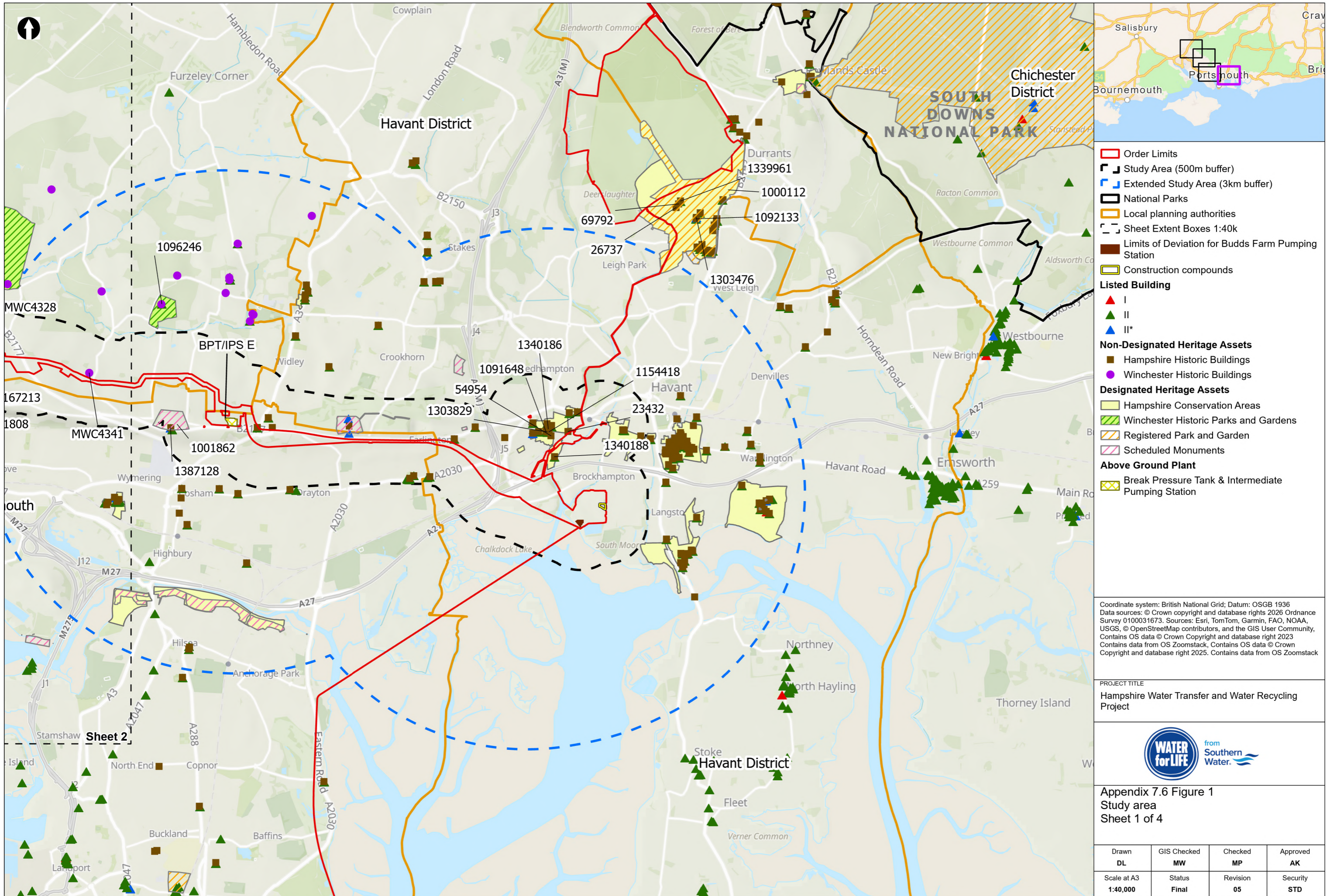
May 2026

Version 0



from
**Southern
Water.** 

The Southern Water logo graphic consists of three stylized, wavy blue lines of varying lengths, positioned to the right of the text 'Southern Water.'



- Order Limits
- Study Area (500m buffer)
- Extended Study Area (3km buffer)
- National Parks
- Local planning authorities
- Sheet Extent Boxes 1:40k
- Limits of Deviation for Budds Farm Pumping Station
- Construction compounds
- Listed Building**
- ▲ I
- ▲ II
- ▲ II*
- Non-Designated Heritage Assets**
- Hampshire Historic Buildings
- Winchester Historic Buildings
- Designated Heritage Assets**
- Hampshire Conservation Areas
- Winchester Historic Parks and Gardens
- Registered Park and Garden
- Scheduled Monuments
- Above Ground Plant**
- Break Pressure Tank & Intermediate Pumping Station

Coordinate system: British National Grid; Datum: OSGB 1936
 Data sources: © Crown copyright and database rights 2026 Ordnance Survey 0100031673. Sources: Esri, TomTom, Garmin, FAO, NOAA, USGS, © OpenStreetMap contributors, and the GIS User Community, Contains OS data © Crown Copyright and database right 2023. Contains data from OS Zoomstack, Contains OS data © Crown Copyright and database right 2025. Contains data from OS Zoomstack

PROJECT TITLE
 Hampshire Water Transfer and Water Recycling Project



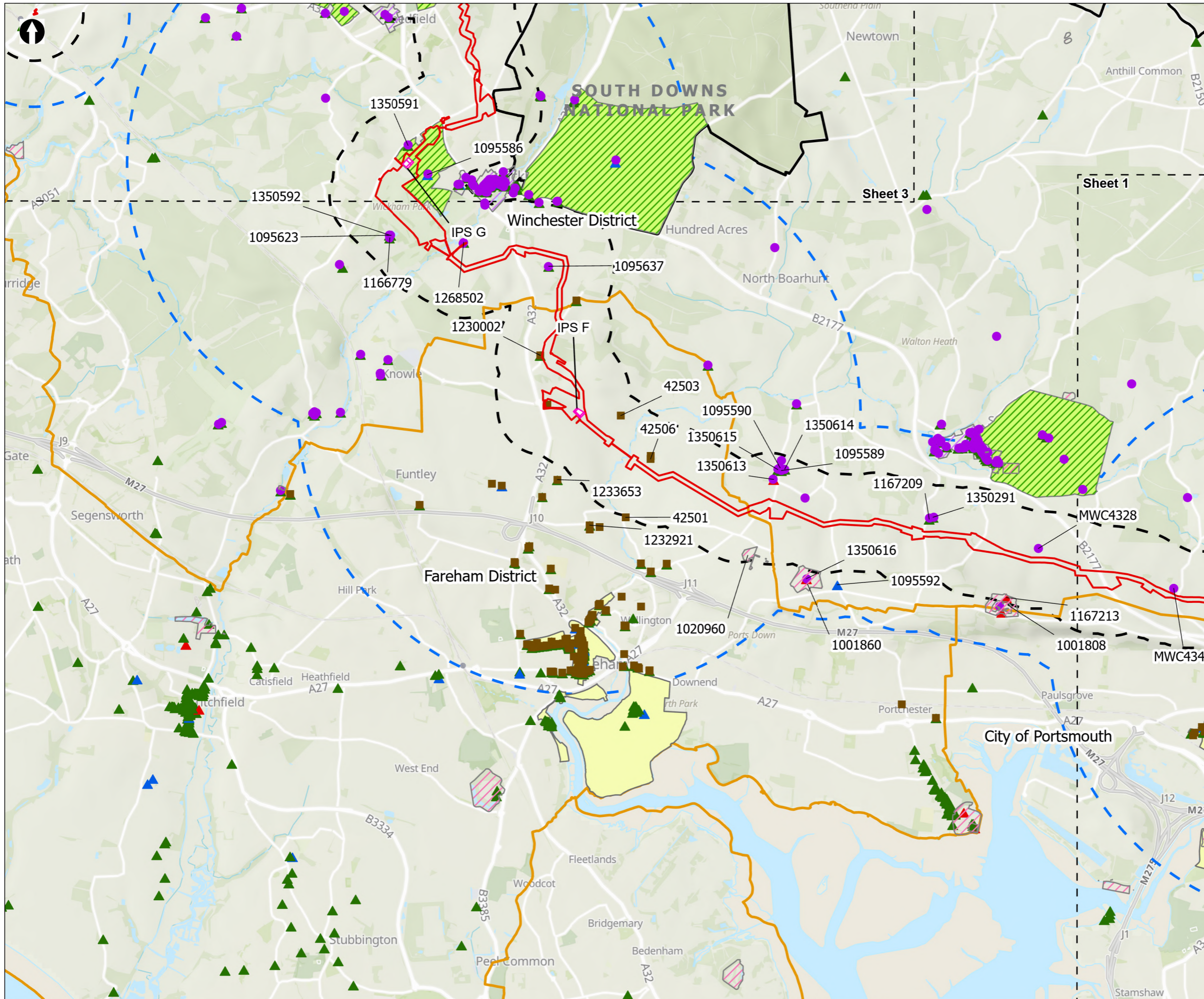
Appendix 7.6 Figure 1
 Study area
 Sheet 1 of 4

Drawn DL	GIS Checked MW	Checked MP	Approved AK
Scale at A3 1:40,000	Status Final	Revision 05	Security STD

Drawing Number
PC5223-RHD-ES-ZZ-D-Z-0145

© Southern Water 2026
 This document is issued for the party which commissioned it and for specific purposes connected with the captioned project only. It should not be relied upon by any other party or used for any other purpose. We accept no responsibility for the consequences of this document being relied upon by any other party, or being used for any other purpose, or containing any error or omission which is due to an error or omission in data supplied to us by other parties.





Order Limits

- Study Area (500m buffer)
- Extended Study Area (3km buffer)
- National Parks
- Local planning authorities
- Sheet Extent Boxes 1:40k

Listed Building

- I
- II
- II*

Non-Designated Heritage Assets

- Hampshire Historic Buildings
- Winchester Historic Buildings

Designated Heritage Assets

- Hampshire Conservation Areas
- Winchester Historic Parks and Gardens
- Winchester Conservation Areas
- Scheduled Monuments

Above Ground Plant

- Intermediate Pumping Station

Coordinate system: British National Grid; Datum: OSGB 1936
 Data sources: © Crown copyright and database rights 2026 Ordnance Survey 0100031673. Sources: Esri, TomTom, Garmin, FAO, NOAA, USGS, © OpenStreetMap contributors, and the GIS User Community, Contains OS data © Crown Copyright and database right 2023. Contains data from OS Zoomstack, Contains OS data © Crown Copyright and database right 2025. Contains data from OS Zoomstack

PROJECT TITLE
 Hampshire Water Transfer and Water Recycling Project



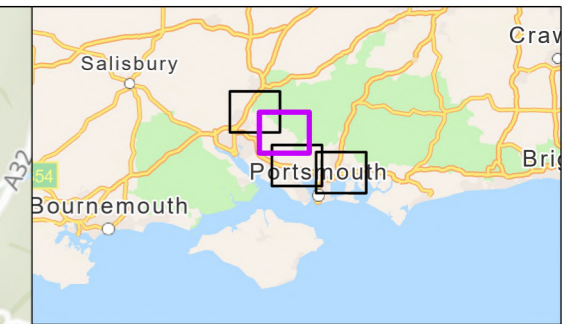
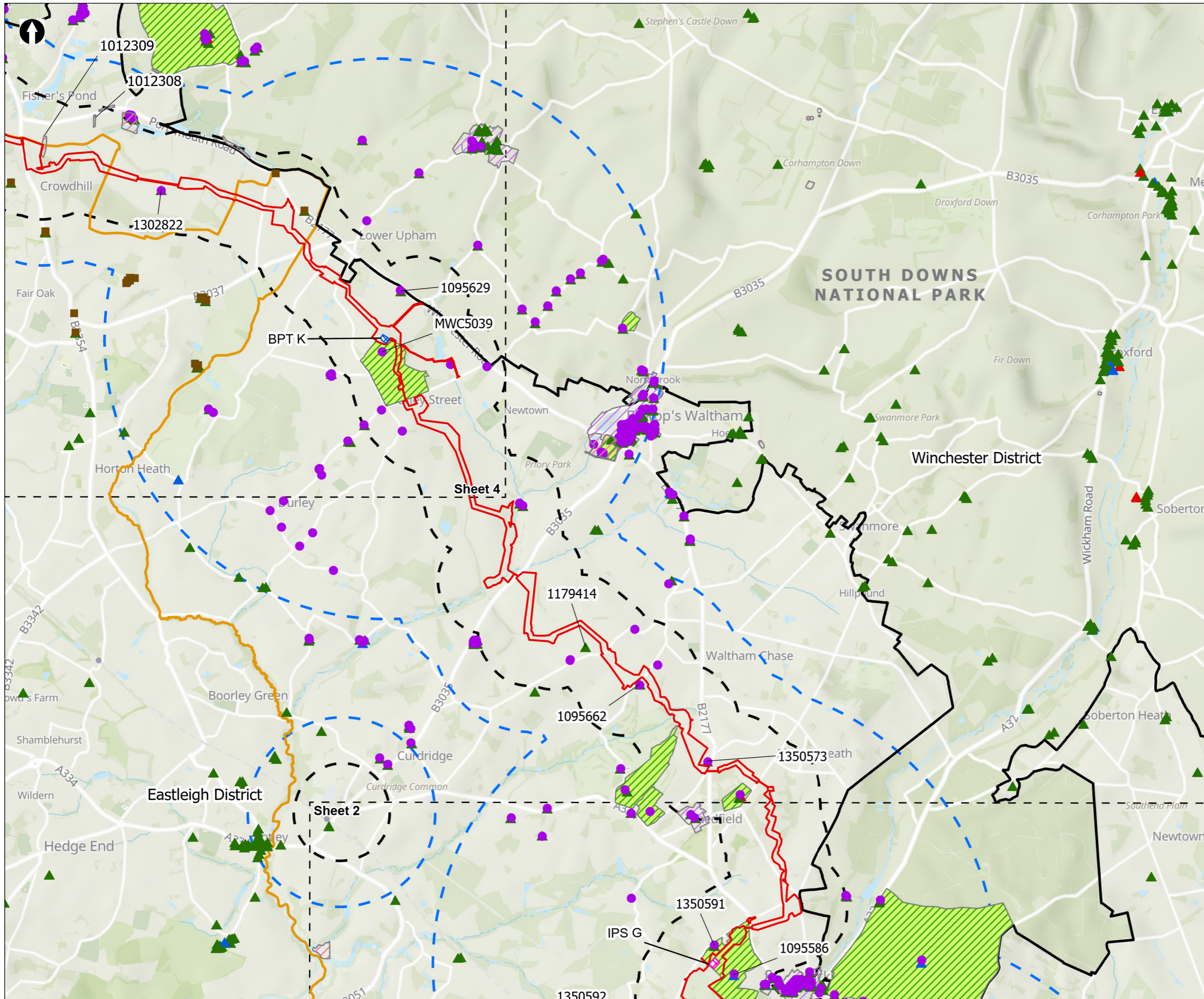
Appendix 7.6 Figure 1
 Study area
 Sheet 2 of 4

Drawn DL	GIS Checked MW	Checked MP	Approved AK
Scale at A3 1:40,000	Status Final	Revision 05	Security STD

Drawing Number
 PC5223-RHD-ES-ZZ-D-Z-0145

© Southern Water 2026
 This document is issued for the party which commissioned it and for specific purposes connected with the captioned project only. It should not be relied upon by any other party or used for any other purpose. We accept no responsibility for the consequences of this document being relied upon by any other party, or being used for any other purpose, or containing any error or omission which is due to an error or omission in data supplied to us by other parties.





- Order Limits
- Study Area (500m buffer)
- Extended Study Area (3km buffer)
- National Parks
- Local planning authorities
- Sheet Extent Boxes 1:40k
- Listed Building**
- ▲ I
- ▲ II
- ▲ II*
- Non-Designated Heritage Assets**
- Hampshire Historic Buildings
- Winchester Historic Buildings
- Designated Heritage Assets**
- Winchester Historic Parks and Gardens
- Winchester Conservation Areas
- Scheduled Monuments
- Above Ground Plant**
- Break Pressure Tank
- Intermediate Pumping Station

Coordinate system: British National Grid; Datum: OSGB 1936
 Data sources: © Crown copyright and database rights 2026 Ordnance Survey 0100031673. Sources: Esri, TomTom, Garmin, FAO, NOAA, USGS, © OpenStreetMap contributors, and the GIS User Community, Contains OS data © Crown Copyright and database right 2023 Contains data from OS Zoomstack, Contains OS data © Crown Copyright and database right 2025. Contains data from OS Zoomstack

PROJECT TITLE
 Hampshire Water Transfer and Water Recycling Project

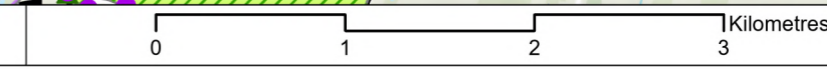


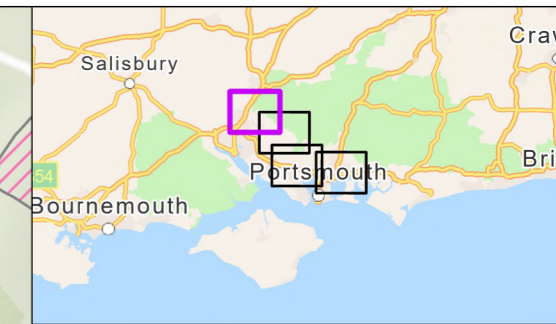
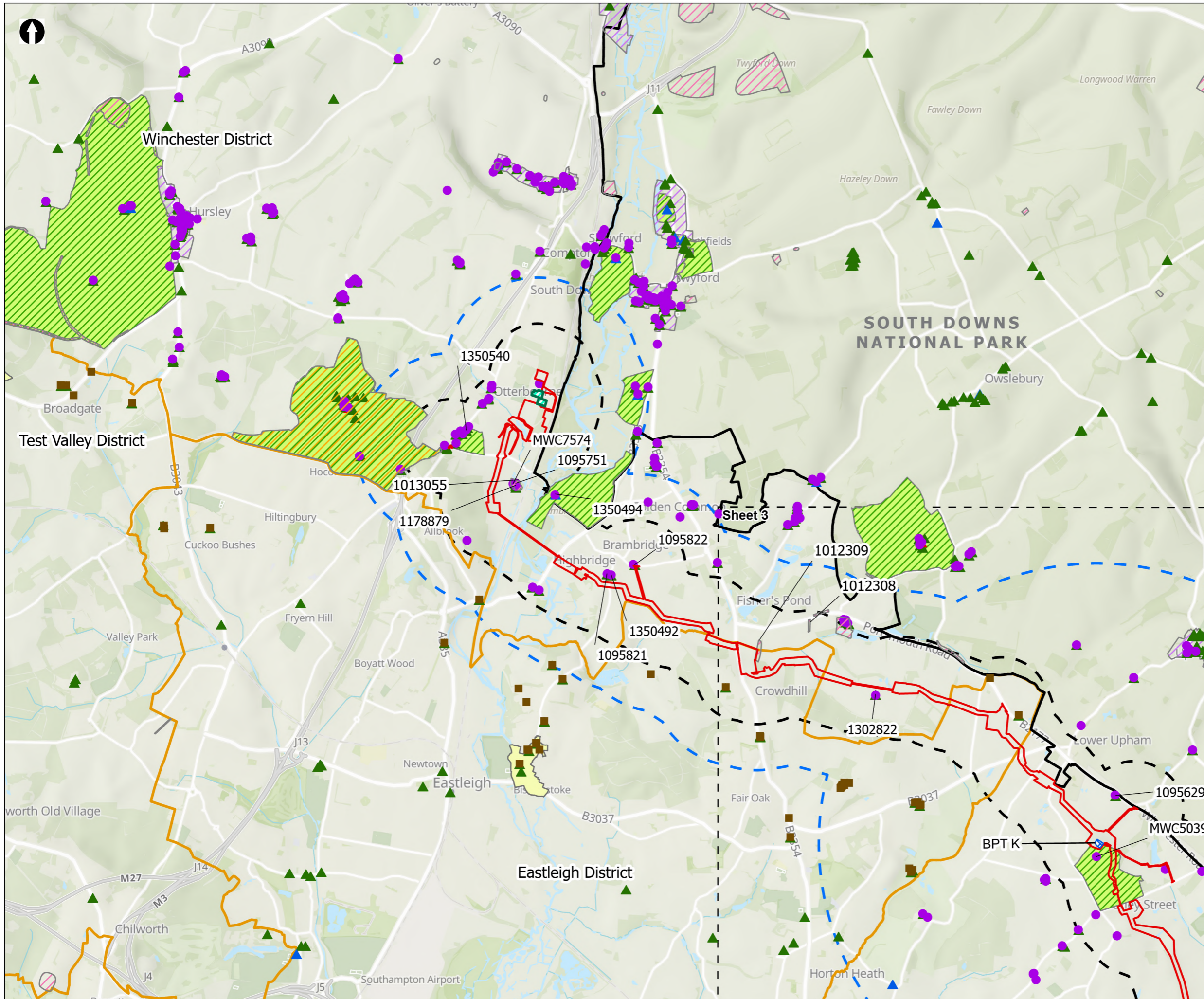
Appendix 7.6 Figure 1
 Study area
 Sheet 3 of 4

Drawn DL	GIS Checked MW	Checked MP	Approved AK
Scale at A3 1:40,000	Status Final	Revision 05	Security STD

Drawing Number
 PC5223-RHD-ES-ZZ-D-Z-0145

© Southern Water 2026
 This document is issued for the party which commissioned it and for specific purposes connected with the captioned project only. It should not be relied upon by any other party or used for any other purpose. We accept no responsibility for the consequences of this document being relied upon by any other party, or being used for any other purpose, or containing any error or omission which is due to an error or omission in data supplied to us by other parties.





- Order Limits
 - Study Area (500m buffer)
 - Extended Study Area (3km buffer)
 - National Parks
 - Local planning authorities
 - Sheet Extent Boxes 1:40k
 - Limits of Deviation for Otterbourne INNS Treatment Plant
- Listed Building**
- ▲ I
 - ▲ II
 - ▲ II*
- Non-Designated Heritage Assets**
- Hampshire Historic Buildings
 - Winchester Historic Buildings
- Designated Heritage Assets**
- Hampshire Conservation Areas
 - Winchester Historic Parks and Gardens
 - Winchester Conservation Areas
 - Registered Park and Garden
 - Scheduled Monuments
- Above Ground Plant**
- Break Pressure Tank

Coordinate system: British National Grid; Datum: OSGB 1936
 Data sources: © Crown copyright and database rights 2026 Ordnance Survey 0100031673. Sources: Esri, TomTom, Garmin, FAO, NOAA, USGS, © OpenStreetMap contributors, and the GIS User Community, Contains OS data © Crown Copyright and database right 2023. Contains data from OS Zoomstack, Contains OS data © Crown Copyright and database right 2025. Contains data from OS Zoomstack

PROJECT TITLE
 Hampshire Water Transfer and Water Recycling Project



Appendix 7.6 Figure 1
 Study area
 Sheet 4 of 4

Drawn DL	GIS Checked MW	Checked MP	Approved AK
Scale at A3 1:40,000	Status Final	Revision 05	Security STD

Drawing Number
 PC5223-RHD-ES-ZZ-D-Z-0145

© Southern Water 2026
 This document is issued for the party which commissioned it and for specific purposes connected with the captioned project only. It should not be relied upon by any other party or used for any other purpose. We accept no responsibility for the consequences of this document being relied upon by any other party, or being used for any other purpose, or containing any error or omission which is due to an error or omission in data supplied to us by other parties.

